

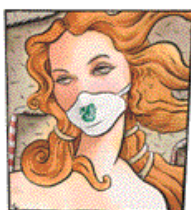
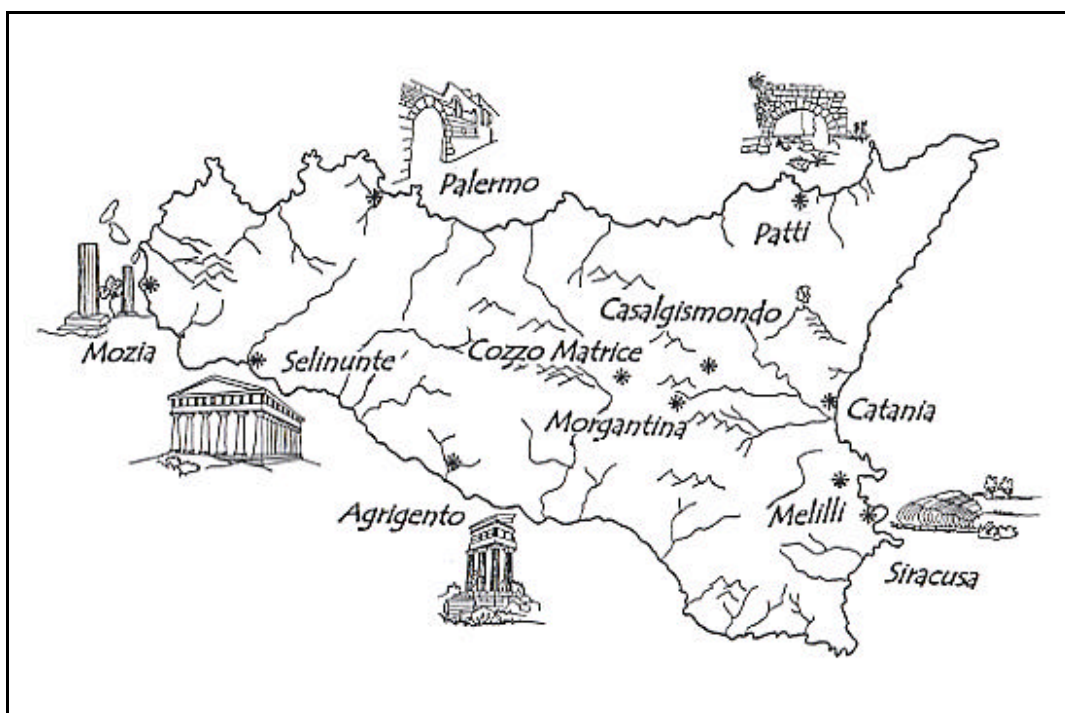


**LEGAMBIENTE**  
COMITATO REGIONALE SICILIANO

## ***SALVALARTE MATTONE SELVAGGIO***

**L'ASSALTO DEL CEMENTO AL PATRIMONIO ARCHEOLOGICO  
DELLA SICILIA**

***11 STORIE ESEMPLARI***



**CAMPAGNA NAZIONALE SALVALARTE 2001**